

RATIONALE

TO CORRECT MAX WEIGHT AND GENERAL UPDATE OF STANDARD REFERENCES.

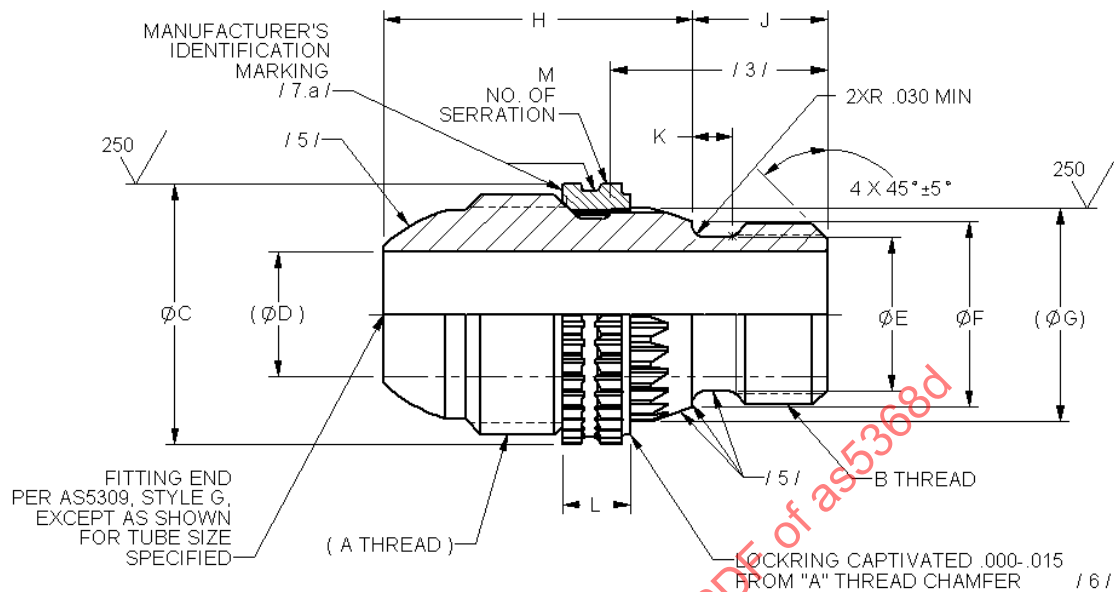


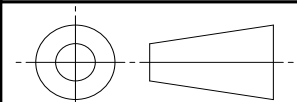
FIGURE 1 - ADAPTER ASSEMBLY

TABLE 1A - DIMENSIONS

BASIC NO. AS5368 /16/ SIZE CODE	(NOMINAL TUBE SIZE)	A THREAD AS8879	B THREAD AS8879	C	D	E +.005 -.002	F MIN	G
04	.250	.4375-20UNJF-3A	.3125-24UNJF-3A	.514	.168 - .175	.239	.331	.400
05	.312	.5000-20UNJF-3A	.3750-24UNJF-3A	.624	.230 - .237	.301	.393	.491
06	.375	.5625-18UNJF-3A	.4375-20UNJF-3A	.700	.293 - .301	.364	.456	.544
08	.500	.7500-16UNJF-3A	.5625-18UNJF-3A	.814	.387 - .395	.482	.574	.670
10	.625	.8750-14UNJF-3A	.6875-24UNJEF-3A	1.040	.480 - .488	.625	.717	.824
12	.750	1.0625-12UNJ-3A	.8125-20UNJEF-3A	1.170	.604 - .614	.737	.891	.981
16	1.000	1.3125-12UNJ-3A	1.1250-18UNJEF-3A	1.456	.839 - .851	1.000	1.154	1.251

SAE values your input. To provide feedback on this Technical Report, please visit <http://www.sae.org/technical/standards/AS5368D>

THIRD ANGLE PROJECTION



CUSTODIAN: G-3/G-3B

PROCUREMENT SPECIFICATION: /4/ AS4841



AEROSPACE STANDARD

FITTING ASSEMBLY, ADAPTER – RING LOCKED PORT
CONNECTION TO FLARED TUBE END,
3000 PSI

AS5368
SHEET 1 OF 3

REV.
D

TABLE 1B - DIMENSIONS AND WEIGHTS

BASIC NO. AS5368 /16/ SIZE CODE	H +.010 -.005	J +.000 -.015	K +.010 -.005	L ±.007	M	(P) STAND-OFF AFTER INSTL /9/ ±.020	WEIGHT LB/EA MAX
04	.856	.355	.125	.192	30	.690	.040
05	.856	.381	.125	.192	36	.690	.050
06	.931	.395	.125	.210	36	.750	.065
08	1.091	.430	.125	.210	40	.910	.110
10	1.191	.465	.125	.210	38	1.010	.175
12	1.301	.527	.157	.220	40	1.120	.265
16	1.341	.564	.157	.220	36	1.160	.360

NOTES

1. MATERIAL:

- a. FITTING: A286 CORROSION RESISTANT STEEL PER AMS5731, AMS5732, AMS5734, OR AMS5737.
- b. LOCKRING: A286 CORROSION RESISTANT STEEL PER AMS5731, AMS5732, AMS5734, AMS5737, OR AMS5853.

2. HEAT TREATMENT: IF THE RAW MATERIAL IS PROCURED IN THE SOLUTION TREATED CONDITION, AGE PER AMS2759/3 TO:

- a. FITTING: 130 KSI UTS MINIMUM.
- b. LOCKRING: 34 TO 40 HRC.

/3/ FINISH

- a. FITTING: PASSIVATE PER AMS2700, TYPE 2 OR 8 FOLLOWED BY SOLID FILM LUBE PER AS5272, TYPE I ON NOTED SURFACES EXCEPT NONE IN FLOW HOLE, OVERSPRAY PERMISSIBLE ON ADJACENT GROOVE.
- b. LOCKRING: PASSIVATE PER AMS2700, TYPE 2 OR 8.

/4/ PROCUREMENT SPECIFICATION: AS4841 EXCEPT AS SPECIFIED ON THIS STANDARD. PRODUCT SUPPLIED TO THIS SPECIFICATION SHALL BE MANUFACTURED BY AN ACCREDITED MANUFACTURER LISTED IN THE NADCAP QUALIFIED MANUFACTURER LIST (QML) FOR THIS TYPE OF PRODUCT. THE QML IS AVAILABLE AT www.eAuditNet.com.

/5/ SEALING SURFACE: NO VISIBLE DEFECTS. TO BE PROTECTED FOR SHIPMENT.

/6/ LOCKRING RETAINED ON FITTING BY CONTROLLED INTERFERENCE FIT.

/7/ IDENTIFICATION:

- a. MARK AT LOCATION SHOWN PER AS478 METHOD 2 OR 15, MANUFACTURER'S NAME, TRADEMARK, OR CAGE CODE.
- b. BAG AND TAG PER AS478, METHOD 35D, MANUFACTURER'S NAME, TRADEMARK, OR CAGE CODE AND PART NUMBER.

8. WORKING PRESSURE: THIS PART IS DESIGNED FOR USE IN 3000 PSI WORKING PRESSURE SYSTEMS COMPATIBLE WITH CRES A286.

/9/ ADAPTERS TO BE INSTALLED PER AS1301 INTO BOSS CAVITIES PER AS1300. FOR DESIGN PURPOSES ONLY. INSTALLED STAND-OFF (P) ±.020 AND INSTALLED LOCKRING HEIGHT, SEE AS1301, "R" MAXIMUM.

	AEROSPACE STANDARD	AS5368 SHEET 2 OF 3	REV. D
	FITTING ASSEMBLY, ADAPTER – RING LOCKED PORT CONNECTION TO FLARED TUBE END, 3000 PSI		