

# ASI633

SAE Technical Board rules provide that: "All technical reports, including standards, approved and practices recommended, are advisory only. Their use by anyone engaged in industry or trade is entirely voluntary. There is no agreement to adhere to any SAE standard or recommended practice, and no commitment to conform to or be guided by any technical report. In formulating and approving technical reports, the Board and its Committees will not investigate or consider patents which may apply to the subject matter. Prospective users of the report are responsible for protecting themselves against liability for infringement of patents."

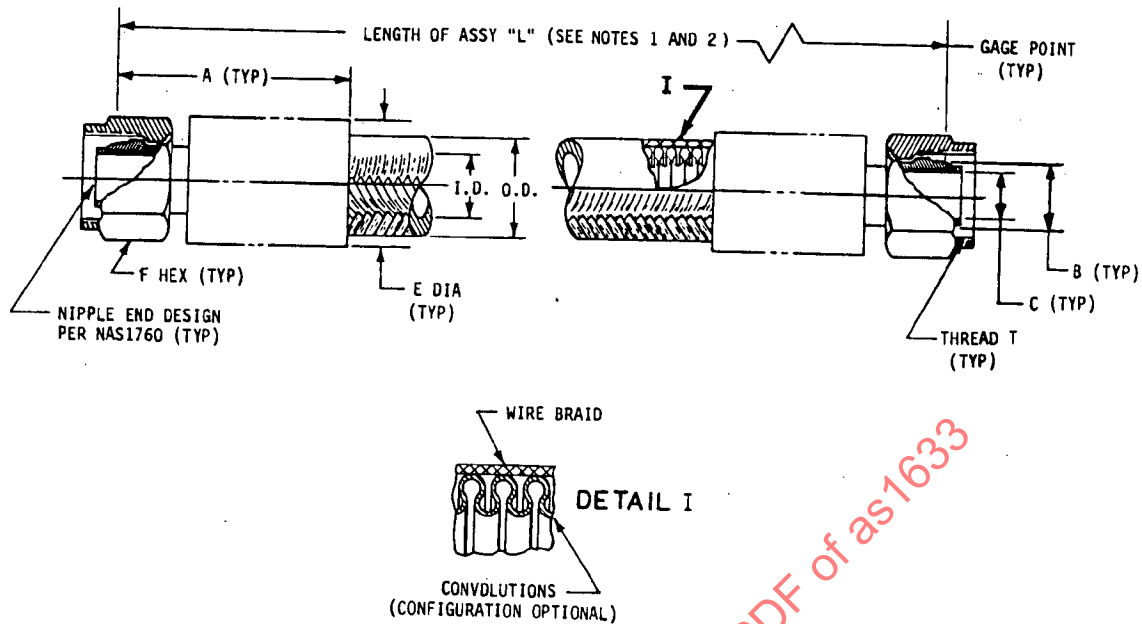


FIGURE 1

TABLE I

HOSE ASSEMBLY NO. AND SIZE CODE	HOSE ASSEMBLY SIZE (REF)	THREAD T PER MIL-S-8879 (REF)	I.D. MIN	A MAX	B GAGE DIA BASIC	C 5/ DRILL DIA MIN	E 6/ DIA MAX WITHOUT SLEEVING	F HEX (REF)
ASI633-04	1/4	.4375-20 UNJF-3B	.270	1.04	.2930	.132	.55	.56
ASI633-06	3/8	.5625-18 UNJF-3B	.355	1.26	.4120	.256	.65	.69
ASI633-08	1/2	.7500-16 UNJF-3B	.510	1.45	.5600	.345	.86	.88
ASI633-10	5/8	.8750-14 UNJF-3B	.600	1.64	.6730	.430	.95	1.00
ASI633-12	3/4	1.0625-12 UNJ -3B	.765	1.82	.8100	.635	1.28	1.25
ASI633-16	1	1.3125-12 UNJ -3B	.980	1.94	1.0620	.835	1.47	1.50
ASI633-20	1-1/4	1.6250-12 UNJ -3B	1.220	2.46	1.3160	1.085	1.70	2.00
ASI633-24	1-1/2	1.8750-12 UNJ -3B	1.480	2.61	1.5650	1.310	2.00	2.25

TABLE II

HOSE ASSEMBLY LENGTH	AVAILABLE INCREMENTS	TOLERANCE
UNDER 18 INCHES	(NOT LESS THAN) .125 INCH	(PLUS OR MINUS) .125 INCH
18 TO 36 INCHES	(NOT LESS THAN) .250 INCH	(PLUS OR MINUS) .250 INCH
36 TO 50 INCHES	(NOT LESS THAN) .500 INCH	(PLUS OR MINUS) .500 INCH
OVER 50 INCHES	(NOT LESS THAN) 1.000 INCH	(PLUS OR MINUS) 1 PERCENT

TABLE III

TABLE III											
HOSE OR COVER CODE	HOSE OR TYPE OF PROTECTIVE COVER	HOSE OR COVER O.D. $\pm .032$ (REF.)								UPPER TEMP. LIMIT °F	
		HOSE SIZE									
		1/4	3/8	1/2	5/8	3/4	1	1-1/4	1-1/2		
NONE	HOSE ONLY	.445	.555	.755	.850	1.060	1.261	1.526	1.783	400	
B	SPIRAL ABRASION	.505	.615	.815	.910	1.125	1.321	1.610	1.870	275	
D	INTEGRAL ABRASION	.562	.688	.906	1.000	1.188	1.438	1.688	1.937	325	
H	INTEGRAL FIRESLEEVE 7/	—	—	1.000	1.188	1.375	1.500	1.750	2.000	400	

Society of Automotive Engineers, Inc.  
400 COMMONWEALTH DRIVE WARRENDALE PA 15096

**AEROSPACE STANDARD**  
**HOSE ASSEMBLY, CONVOLUTED, NONMETALLIC,**  
**TFE, FLARELESS, STRAIGHT TO STRAIGHT**

**ASI633**

SH 1 OF 3

Copyright 1980 by Society of Automotive Engineers, Inc.  
All rights reserved.

Printed in U.S.A.

Revised  
Issued 1-15-80

TABLE IV PHYSICAL REQUIREMENTS OF HOSE ASSEMBLIES

HOSE SIZE (REF)	OPERATING PRESSURE MAX. PSI	PROOF PRESSURE MIN. PSI	BURST PRESSURES		BEND RADIUS AT INSIDE OF BEND INCHES (HOSE ONLY)
			ROOM TEMP. MIN. PSI	HIGH TEMP. MIN. PSI	
-04	1000	2000	4000	2800	1.25
-06	1000	2000	4000	2800	2.25
-08	1000	2000	4000	2800	2.88
-10	1000	1800	3600	2500	3.00
-12	1000	1800	3600	2500	3.75
-16	1000	1800	3600	2500	5.00
-20	1000	1800	3600	2500	6.25
-24	750	1500	3000	2100	7.50

TABLE V NOMINAL WEIGHTS

HOSE SIZE (REF)	HOSE ONLY LBS/IN.	HOSE WITH SPIRAL ABRASION COVER LBS/IN.	HOSE WITH INTEGRAL ABRASION COVER LBS/IN.	HOSE WITH INTEGRAL FIRESLEEVE COVER LBS/IN.	STRAIGHT END FITTING LBS EACH	HOSE LENGTH CORRECTION FACTOR-IN. 8/
-04	.007	.010	.012	-	.06	.50
-06	.010	.014	.017	-	.11	.61
-08	.015	.020	.025	.032	.18	.80
-10	.020	.025	.030	.042	.27	.84
-12	.025	.030	.036	.050	.37	.86
-16	.030	.036	.050	.055	.56	.99
-20	.050	.060	.061	.070	.98	1.11
-24	.060	.071	.075	.082	1.48	1.26

TABLE VI

HOSE SIZE	LENGTH (INCHES)
04 06	2.00 $\pm$ .25
08 10	2.50 $\pm$ .25
12 16	3.00 $\pm$ .25
20 24	3.50 $\pm$ .25

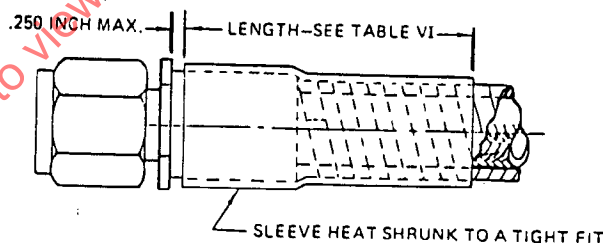


FIGURE 2

CONSTRUCTION AND PERFORMANCE: THESE HOSE ASSEMBLIES SHALL MEET THE CONSTRUCTION AND PERFORMANCE REQUIREMENTS OF AS 620. FITTINGS SHALL BE PERMANENTLY ATTACHED TO THE HOSE.

RATED OPERATING CHARACTERISTICS: SEE AS 620

MATERIALS: HOSE AND FITTINGS - PER AS 620, TYPE II, CLASS 1 OR CLASS 2 AS SPECIFIED BY PART NUMBER.  
SPIRAL ABRASION COVER - BLACK, NYLON COIL PER AS 1294.  
INTEGRAL FIRESLEEVE COVER - RED, SILICONE  
INTEGRAL ABRASION COVER - BLACK, INTEGRALLY BONDED SILICONE COMPOSITE.

MARKING: THE HOSE ASSEMBLIES SHALL HAVE ALL IDENTIFICATION MARKING AS REQUIRED BY AS 620, ELECTRO-ETCHED ON A STAINLESS STEEL BAND NOT MORE THAN 1.0 INCH WIDE. THE CHARACTERS SHALL BE A MINIMUM OF 1/16 INCHES HIGH. THE BAND SHALL BE TIGHT ON THE HOSE BUT WITHOUT PINCHING, AND SHALL BE PERMANENTLY ATTACHED. VARIABLE DATA, SUCH AS MANUFACTURING DATE AND "PT" SYMBOL MAY BE ELECTRO-ETCHED ON ONE END FITTING.