

SAE Technical Standards Board Rules provide that: "This report is published by SAE to advance the state of technical and engineering sciences. The use of this report is entirely voluntary, and its applicability and suitability for any particular use, including any patent infringement arising therefrom, is the sole responsibility of the user."

SAE reviews each technical report at least every five years at which time it may be reaffirmed, revised, or cancelled. SAE invites your written comments and suggestions.

AS14243

FEDERAL SUPPLY CLASS
5340

NOTICE

THIS DOCUMENT HAS BEEN TAKEN DIRECTLY FROM U.S. MILITARY SPECIFICATION DS14243, NOTICE 1 AND CONTAINS ONLY MINOR EDITORIAL AND FORMAT CHANGES REQUIRED TO BRING IT INTO CONFORMANCE WITH THE PUBLISHING REQUIREMENTS OF SAE TECHNICAL STANDARDS. THE INITIAL RELEASE OF THIS DOCUMENT IS INTENDED TO REPLACE DS14243, NOTICE 1. ANY PART NUMBERS ESTABLISHED BY THE ORIGINAL SPECIFICATION REMAIN UNCHANGED.

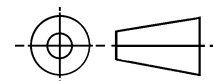
THE ORIGINAL MILITARY SPECIFICATION WAS ADOPTED AS AN SAE STANDARD UNDER THE PROVISIONS OF THE SAE TECHNICAL STANDARDS BOARD (TSB) RULES AND REGULATIONS (TSB 001) PERTAINING TO ACCELERATED ADOPTION OF GOVERNMENT SPECIFICATIONS AND STANDARDS. TSB RULES PROVIDE FOR (A) THE PUBLICATION OF PORTIONS OF UNREVISED GOVERNMENT SPECIFICATIONS AND STANDARDS WITHOUT CONSENSUS VOTING AT THE SAE COMMITTEE LEVEL, AND (B) THE USE OF THE EXISTING GOVERNMENT SPECIFICATION OR STANDARD FORMAT.

UNDER DEPARTMENT OF DEFENSE POLICIES AND PROCEDURES, ANY QUALIFICATION REQUIREMENTS AND ASSOCIATED QUALIFIED PRODUCTS LISTS ARE MANDATORY FOR DOD CONTRACTS. ANY REQUIREMENT RELATING TO QUALIFIED PRODUCTS LISTS (QPL'S) HAS NOT BEEN ADOPTED BY SAE AND IS NOT PART OF THIS SAE TECHNICAL DOCUMENT.

SAENORM.COM : Click to view the full PDF of as14243



THIRD ANGLE PROJECTION



PREPARED BY SAE COMMITTEE E-25

PROCUREMENT SPECIFICATION: MIL-S-23190



AEROSPACE STANDARD

CLAMP, LOOP, NYLON,
METRIC

AS14243
SHEET 1 OF 3

ISSUED 1999-08 REAFFIRMED 2005-05

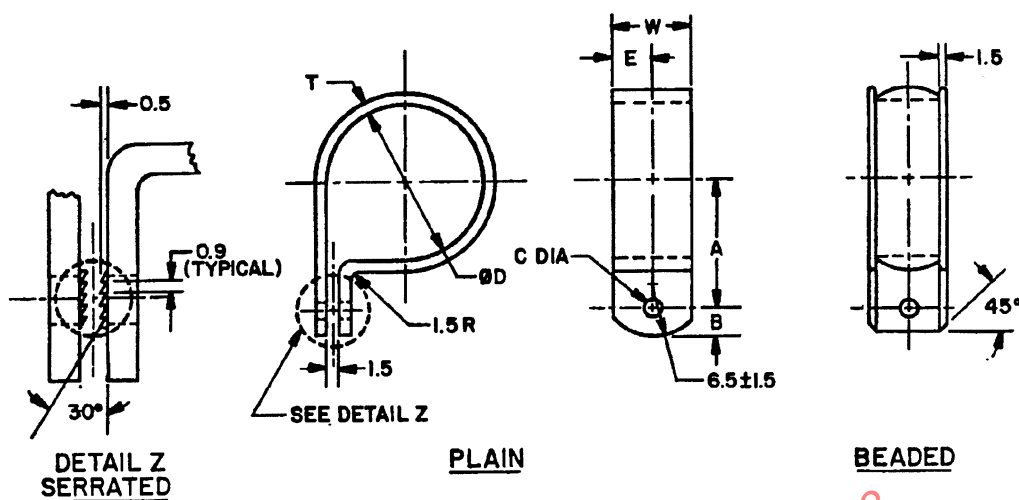


TABLE I. DASH NUMBERS AND DIMENSIONS

DASH NO	NOM SIZE ØD	W ±0.4	T ±0.4	A ±1.5	B ±0.8	C ±0.13	E ±0.20
03	3.2	9.5	1.3	10.2	6.0	4.5	4.75
04	4			10.6			
06	6			11.6			
08	8			12.6			
10	10			13.6			
12	12	12.7	1.5	14.6	7.0	6.0	6.35
14	14			15.6			
16	16			17.6			
18	18			18.6			
20	20			19.6			
22	22			20.6			
24	24			21.6			
26	26			22.6			
28	28			23.6			
30	30			24.6			
32	32			25.6			
34	34		1.8	26.9			
36	36			27.9			
38	38			28.9			
40	40			29.9			